

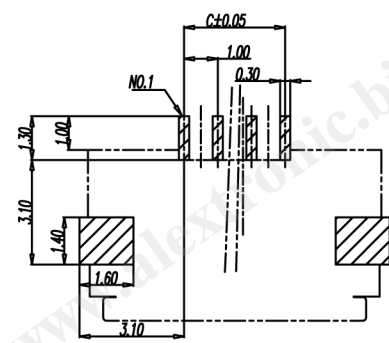
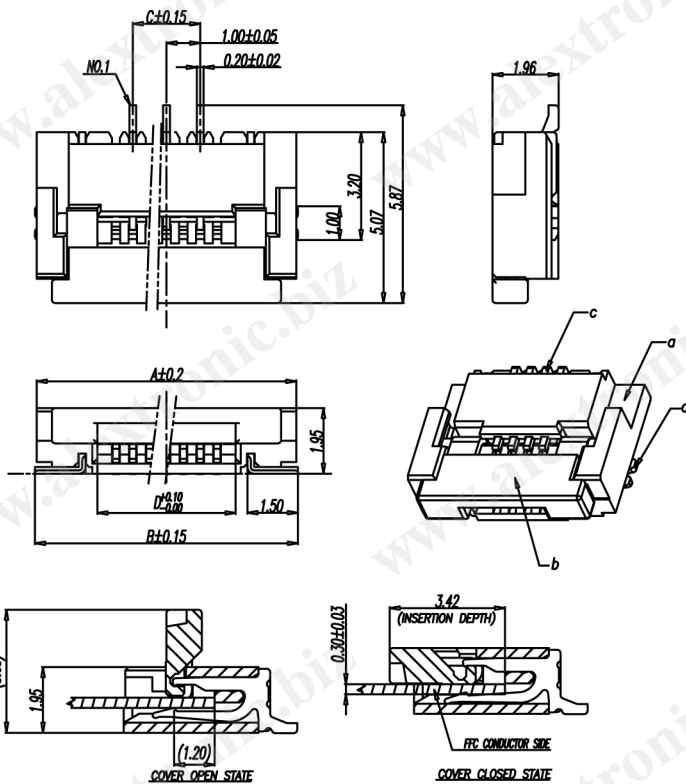
CATEGORY	DESCRIPTION	P/N #
CONNECTOR	PITCH 1.0mm FPC CONNECTOR SMT TYPE	FC122R-XX010-103S

FC122R-XX010-103S

See Table 1

REV.	ECN NO	DESCRIPTION	REVISED	DATE
A01		New Release	JXM	2009.09.15

- SPECIFICATION
- CURRENT RATING : 0.5 Amp MAX.
 - DIELECTRIC WITHSTANDING VOLTAGE : AC 250V.
 - INSULATION RESISTANCE: 50MΩ MIN.
 - OPERATING TEMPERATURE : -20°C TO +85°C.
 - MAX. PROCESSING TEMPERATURE : 245°C FOR 30 SEC.



Recommend PCB Layout
(Jack Top View)
Tolerance: ±0.05mm

NO.	PART NAME	Q'TY	MATERIAL	PLATING & COLOR	Remark
d	PEG	2	BRASS, t=0.2mm	TIN PLATING	
c	TERMINAL	XX	PHOSPHOR BRONZE, t=0.2mm	TIN PLATING	
b	COVER	1	HEAT RESISTANCE PLASTIC, UL94V-0	BLACK	
a	HOUSING	1	HEAT RESISTANCE PLASTIC, UL94V-0	NATURE	

Product Drawing
ALEXTRONIC

UNLESS OTHERWISE SPECIFIED TOLERANCES

SCALE: free UNIT: mm DWG. NO:

SIZE: A3 PAGE: 1 OF 2 REV: A01

DECIMALS: ANGLES:

X :±0.5 X :±2°

X.X :±0.3 X.X :±1'

X.XX :±0.2

APPROVED BY: WYX CHECKED BY: Pengjie PREPARED BY: JXM

CUSTOMER COPY

CATEGORY	DESCRIPTION	P/N #
CONNECTOR	PITCH 1.0mm FPC CONNECTOR SMT TYPE	FC122R-XX010-103S

FC122R-XX010-103S

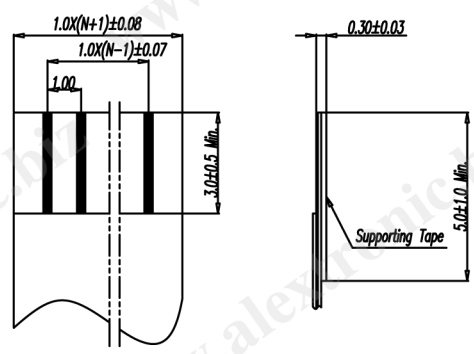
See Table 1

REV.	ECN NO	DESCRIPTION	REVISED	DATE
A01		New Release	JXM	2009.09.15

- SPECIFICATION
- CURRENT RATING : 0.5 Amp MAX.
 - DIELECTRIC WITHSTANDING VOLTAGE : AC 250V.
 - INSULATION RESISTANCE: 50MΩ MIN.
 - OPERATING TEMPERATURE : -20°C TO +85°C.
 - MAX. PROCESSING TEMPERATURE : 245°C FOR 30 SEC.

Table 1:
Pin Q'TY & Dimension

Q'TY	Dimension				Q'TY	Dimension			
XX	A	B	C	D	XX	A	B	C	D
02	6.70	6.80	1.00	3.12	16	20.70	20.80	15.00	17.12
03	7.70	7.80	2.00	4.12	17	21.70	21.80	16.00	18.12
04	8.70	8.80	3.00	5.12	18	22.70	22.80	17.00	19.12
05	9.70	9.80	4.00	6.12	19	23.70	23.80	18.00	20.12
06	10.70	10.80	5.00	7.12	20	24.70	24.80	19.00	21.12
07	11.70	11.80	6.00	8.12	21	25.70	25.80	20.00	22.12
08	12.70	12.80	7.00	9.12	22	26.70	26.80	21.00	23.12
09	13.70	13.80	8.00	10.12	23	27.70	27.80	22.00	24.12
10	14.70	14.80	9.00	11.12	24	28.70	28.80	23.00	25.12
11	15.70	15.80	10.00	12.12	25	29.70	29.80	24.00	26.12
12	16.70	16.80	11.00	13.12	26	30.70	30.80	25.00	27.12
13	17.70	17.80	12.00	14.12	27	31.70	31.80	26.00	28.12
14	18.70	18.80	13.00	15.12	28	32.70	32.80	27.00	29.12
15	19.70	19.80	14.00	16.12	29	33.70	33.80	28.00	30.12



APPLICABLE FFC/FPC DIM.

Product Drawing
ALEXTRONIC

UNLESS OTHERWISE SPECIFIED TOLERANCES

SCALE: free UNIT: mm DWG. NO:

SIZE: A3 PAGE: 2 OF 2 REV: A01

DECIMALS: ANGLES:

X :±0.5 X :±2°

X.X :±0.3 X.X :±1'

X.XX :±0.2

APPROVED BY: WYX CHECKED BY: Pengjie PREPARED BY: JXM

CUSTOMER COPY